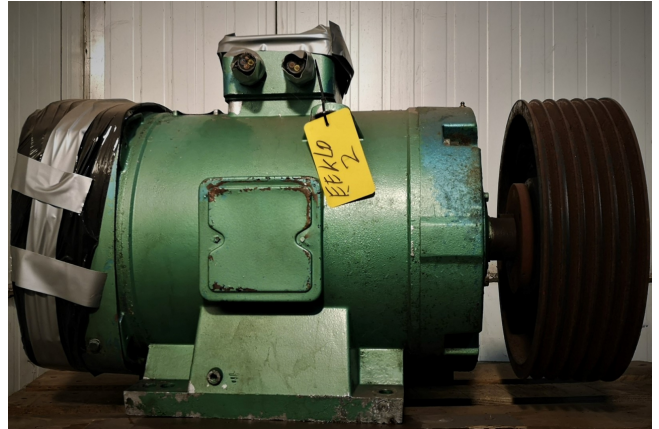


Leroy Somer P-225 M-4

Specifications

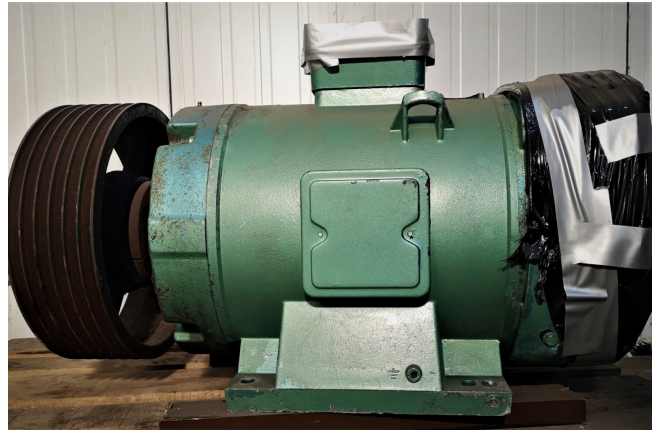
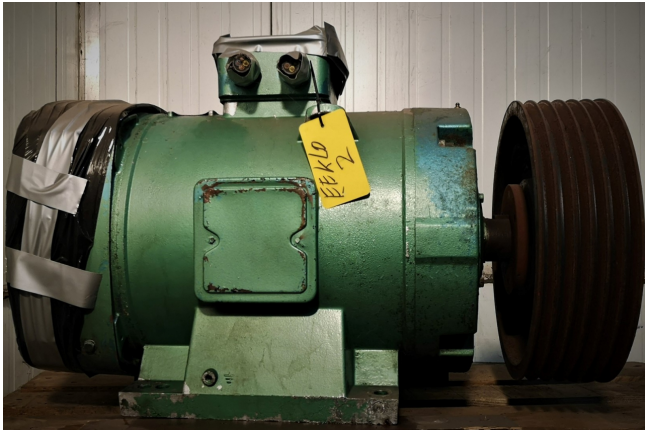
Marke	Leroy Somer
Art	P-225 M-4
kW	55
RPM	1460
Size & Weight	810x400x520 mm (LxWxH)
50 Hz / 60 Hz	50 Hz
Stock	1



Description

Used Leroy Somer P-225 M-4

Gebrauchter Leroy Somer P-225 M-4 Elektromotor mit 55 kW und 1460 U/min bei 50 Hz. Größen: 810x400x520 mm (LxBxH).



MOT ASYN		067 1900	
N°	105796714	IP	23S 50 Hz 3 φ
TYP	P 225 H-4	V	230
Kw	55	A	109
RPM	1460	Id/in	5.1
S	T	Cd/Cn	2.3
CL	F M 240 kg.	m	Cos φ 0.84
°C	40 Alt	dBA	η 91.5
J rot.	kg/m²		
CA. DE	6214 CE	ESSO	3000 h
COA	6214 CE	UNIREX	N° 3 30 8
NDE		GRAISSE/GREASE	
bea. lag Roulements			
PRESTIBLOC		NFC 51111.79	
16015 Anoulême FRANCE		CEI 34.1	
MOTEURS LEROY-SOMER			